

D200 TRUNK TRAY ADDENDUM



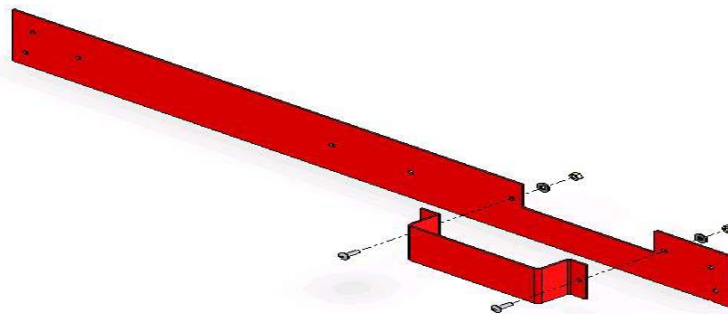
ASSEMBLE COMPLETELY
(OUTSIDE OF VEHICLE)



- A. MOUNT SIDE RAILS (4 BOLTS).
- B. INSTALL LATCHES (BOTH ENDS) AND ADJUST AS NEEDED.



- C. ASSEMBLE THE STIFFENER BAR BRACKET ON THE STIFFENER BAR. BRACKET COVERS FUEL PUMP RELAY ON PASSENGER SIDE.



D. INSTALL MOUNT SUPPORT PLATE TO REAR OF TRAY (BOTH ENDS).

NOTE: PLATE SHOULD BE MOUNTED WITH ¼-20 X ¾" HEX BOLT, ¼" STD. FLAT WASHERS ON BOTH SIDES, AND A ¼ -20 ESNA NYLON LOCKNUT.



E. PLACE TRAY INSIDE VEHICLE (ON PACKING SHELF). USING THE FOUR EXISTING HOLES ALREADY IN THE SUPPORT MOUNTING PLATE AS A GUIDE, AND A 5/16" DRILL BIT. DRILL THE FOUR MOUNTING HOLES INTO THE SHEET METAL BEHIND THE BACK SEAT. MOUNT THE TRAY INTO POSITION USING ¼-20 X 1" BOLTS.

INSTALLATION INSTRUCTIONS

PRO-GARD PRODUCTS LLC

D200 TRUNK TRAY



Read all instructions before beginning installation!

PARTS LIST:

TRUNK TRAY – 1 EA.
REVERSIBLE BACK PLATE – 1EA.
TIRE MOUNTING BRACKET – 1 EA.
SLIDE RAIL BRACKETS – 2 EA.
LOCKING BRACKETS – 2 EA.
FOAM BLOCK – 1EA.



Photo 1

(3X17) ¼-20 ESNA NYLON LOCKNUT - 20 EA
(3X33) ¼-20 STANDARD FLAT WASHER - 32 EA
(3X36) ¼-20 X 5/8,GR5, CARRIAGE BOLT - 14 EA
(3X129) ¼-28 X 1/2" HH TREAD CUTTING- 6 EA
(3X122) ¼-20 X 1,HH,D,M/S,ZN,GR5 - 6 EA
(3X130) 5/16 ID X 1/4" SPACER, ALUMINUM – 2 EA



Photo 2

1. Inventory all parts. (See Photos 1 and 2)
2. Remove back seat. To install the slide rail brackets, two holes must be drilled through the sheet metal behind the back seat. Line up the slide rail bracket as shown in photo 3. Drill two holes in rear for bolts shown in photo 4. Pull back insulation shown in photo 5 and insert bolts into holes shown in photo 6. Attach bolts loosely. Do this for both slide rail brackets.



Photo 3



Photo 4



Photo 5



Photo 6

3. After two rear bolts are attached loosely on each side, line up the front mounting hole of the rail slide bracket and drill hole in trunk hinge shown in photo 7. Attach bracket loosely to trunk hinge with a spacer, a bolt, and a nut. Do this for both brackets. After brackets have been installed with three bolts each, go back and tighten the front bolts only. Leave the two rear bolts loose until tray in installed.

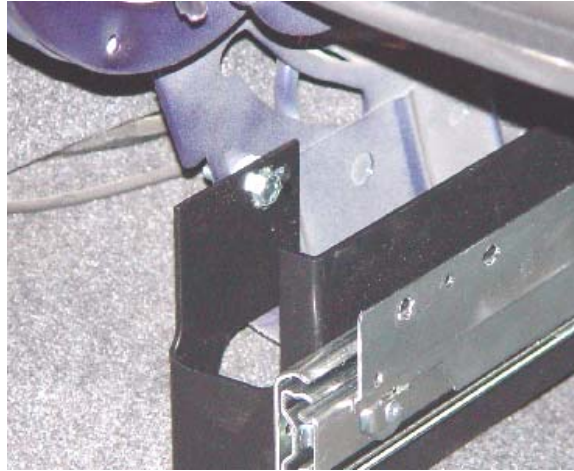


Photo 7

4. Before installing trunk tray, attach the reversible back plate on either side according to your preference, and the foam “buffer block” to trunk tray as shown in photos 8 and 9. To attach the foam, peel off the plastic exposing the adhesive side and stick on the bottom of the tray as shown in photo 9.

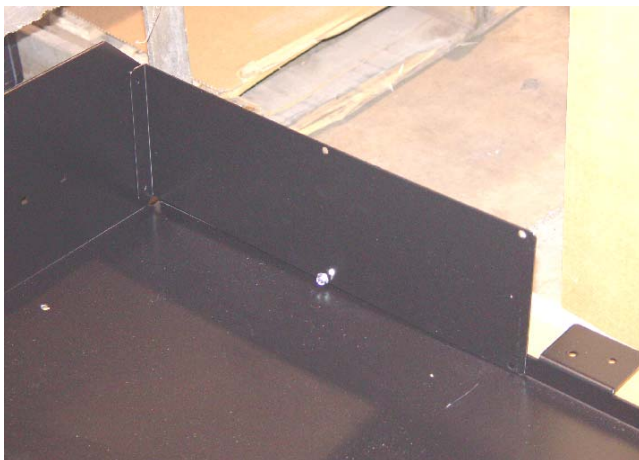


Photo 8

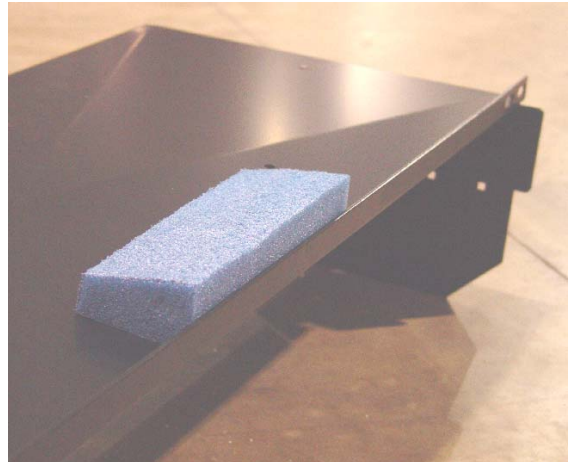


Photo 9

5. Attach trunk tray to slide rail brackets. Attach 4 bolts each side as shown in photos 10 and 11. After tray is attached on both sides go back and tighten the two rear mounting bolts on the slide rail brackets on each side in the rear.



Photo 10

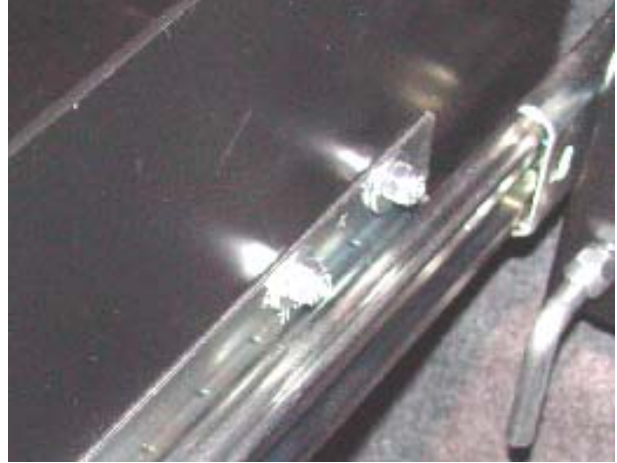


Photo 11

6. Attach locking brackets loosely, as shown in photo 12, to the trunk tray and adjust for proper fitment to the locking pins.

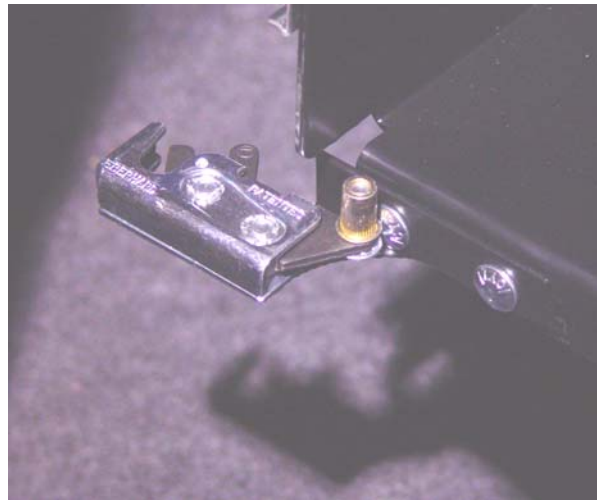


Photo 12

7. Attach tire-mounting bracket to trunk tray as shown in photo 13 and 14. Use factory tire hook to secure tire to tray. Attach factory tire hook to tire-mounting bracket shown in photo 13.

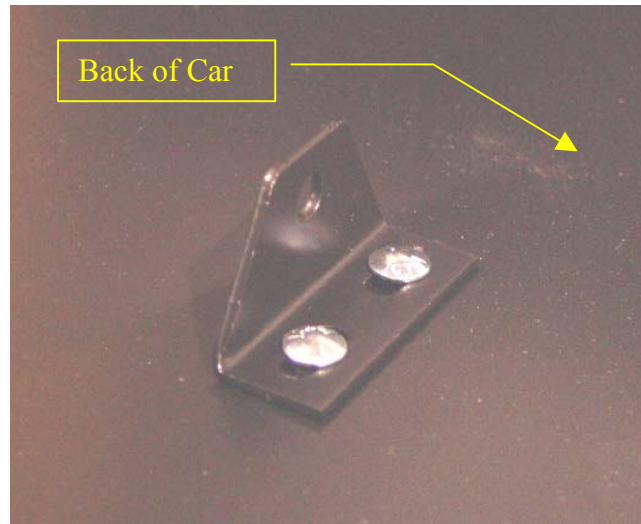


Photo 13

8. Trunk Tray should slide smoothly from the closed position to the open position and back. If Trunk Tray is not sliding smoothly check to make sure that the Slide Rails are installed properly. (See Photo 14)



Photo 14

9. Check lock engagement and adjust locking brackets for smooth positive lock engagement.

IF THERE ARE ANY QUESTIONS OR CONCERNS PLEASE CONTACT:

PRO-GARD PRODUCTS LLC

Phone: 317-579-6680

Fax: 317-579-6681