

PRO-GARD PRODUCTS, LLC  
'06-'07 CHARGER  
DP56C06 ABS DOOR PANEL and WB56C06  
WINDOW BAR  
INSTALLATION INSTRUCTIONS



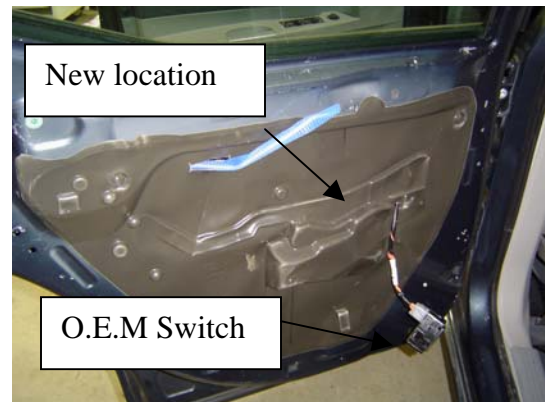
**THESE DOOR PANELS AND WINDOW BARS CAN ONLY BE USED TOGETHER,  
THEY CANNOT BE USED INDEPENDENTLY.**

**NOTE:** Carefully review the parts contents list below and familiarize yourself with these parts. If there are any missing components or questions, call (317) 769-6680 and ask for “Customer Service”.

- 1 pair #DP56C06 ABS Door Panels
- 1 pair #WB56C06 Window Bars
- 1 pkg. #3X72 Self-drilling sheet metal screws
- 2 pcs. Self-adhesive foam

**Read and understand all instructions before beginning installation.**

1. Remove O.E.M. rear door panel using the correct tools. To release the plastic fasteners, simply push in on the centers. Save the 4 screws from along the bottom for later use. Now remove the 1 pc. plastic upper door trim from around the front, top and rear of the window opening. Next remove the lower rubber window molding along the bottom inside of the window by pulling up, starting at one end.



**Photo #1**

2. Peel the rear half of the “insulation shield” behind the O.E.M panel loose by gently peeling away the adhesive bead around the perimeter to allow access to the inside of the door. The manual door lock rod can easily be removed by releasing the plastic clip that holds it to the actuator plate inside the door. The door lock rubber grommet should also be removed. See **photo #1 and 2**



**Photo #2**

**Note: The power window will not operate with the switch removed from the harness.**

## Door panel and window bar installation

Replace the insulation shield. Secure the window switch harness high on the outside of the insulation shield. **(See photo #1)** Hold the ABS door panel in place and start the four screws (saved from OEM panel) along the bottom of door into OEM threaded inserts. **(See photo #3)** Do not tighten at this time.

OEM Door Panel Mounts  
(4) Locations

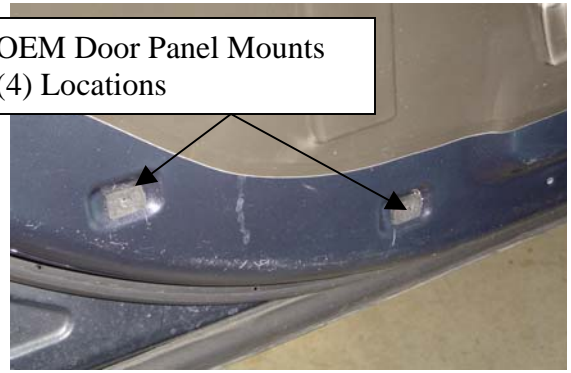


Photo #3

3. Insert the window bar assembly inside the top of the door panel so the clips lay flat and flush against the inside of door frame lip. (Tabs can be bent slightly to make them flat against the door lip.) The heel of the clips should locate the window bar vertically, while the door panel locates it horizontally. Find the oblong clearance hole near the rear of the lower rail and mark its location on the inside of the door with a felt tip marker. **(See Photo #5)** Set the bar

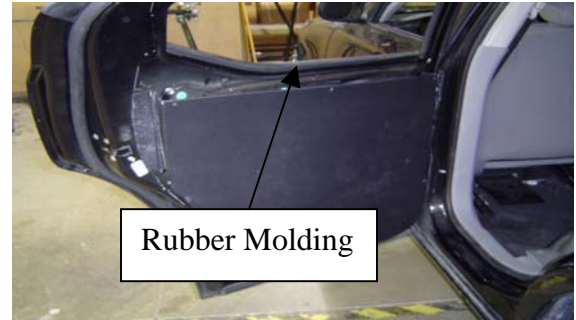


Photo #4

aside and apply one of the self-adhesive foam strips to cover this marked location. Now put the bar back in place and re-install the lower rubber window molding along the door frame lip so it captures the clips. **(See Photo #4)** Secure the window bar (6 places) using the 3X72 self-drilling Philips head screws provided. A 3/32" drill bit maybe required in some areas. **Be sure that all wires and other door components are free and clear before drilling.**



Photo #5

4. After fastening the window bar assembly, screw the top of the ABS door panel to the lower rail of the window bar using holes and 3X72 screws provided. **(See Photo #6)** Now finish attaching the door panel to the door using holes and 3X72 screws provided. **Be sure that all wires and other door components are free and clear before drilling.**



Photo #6

5. Tighten all fasteners starting from front of the door to the rear of the door.

**Note: Pro-Gard Products, LLC insists that only the screws that are provided be used for this installation. Longer screws could damage the outer door skin.**

IF THERE ARE ANY QUESTIONS OR CONCERNS PLEASE CONTACT:

PRO-GARD PRODUCTS, LLC

Phone: 317-579-6680

Fax: 317-579-6681