

**PRO-CLAMP
INSTALLATION INSTRUCTIONS
FOR G5510 SERIES GUNRACKS**



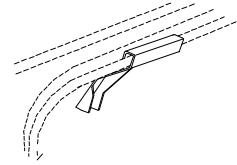
- I. Check to insure that the following parts are included in your package.
 - A. Pro-Clamp tube, 1 each, 3G9062, 38 1/2" long
 - B. End-Clamp, 1 each, 3G9073 Standard w/slot
 - C. End-Clamp, 1 each, 3G9074 Standard w/holes
 - D. End Cap, Square, 1 each, 3G5102
 - E. Nut Cap, 1 each, 3G5103
 - F. 3X13- 3/8" standard flat washer, 3 each
 - G. 3X64- 3/8"-16 nylon insert locknut, 2 each
 - H. 3X 86- 7/16"-14X6.0 tap bolt, 1 each
 - I. Foam Tube, 1 each, 3P4010S, assembled
 - J. Gun Lock Kit, 1 each, containing timer G1002 and momentary switch G5100

- II. You will need the following tools to complete installation:
 - A. 7/16" wrench or socket
 - B. 9/16" wrench or socket
 - C. 5/8" socket swivel or 5/8" crow foot
 - D. 3-6" extension (3/8" or 1/2" drive)
 - E. Torque wrench (3/8" or 1/2" drive)

- III. Mounting Instructions
 - A. Remove the 3G9074 end clamp with holes from the Pro-Clamp tube.

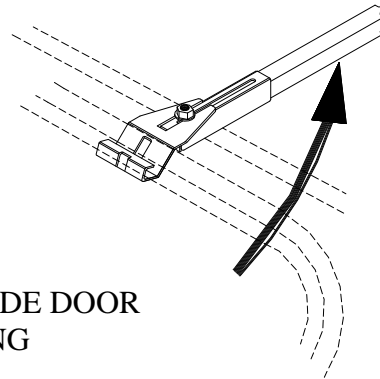
B. Hang the 3G9074 end clamp on the rain gutter on the driver side of the vehicle.

DRIVER
SIDE
DOOR
OPENING



C. Loosen the 3/8" locknut on the 3G9073 end clamp with slot. Do not remove completely. Loosen only until there is room for the clamp to slide for adjustment.

D. Hook the bar assembly with the 3G9073 (slotted) end clamp over the passenger side rain gutter, and rest it on the seat. From the driver side, lift the free end of bar assembly and swing it up to meet the free hanging clamp on the driver side. Push the stud on top of the bar through the hole on the end clamp that is closest to the stud. Add a 3/8" locknut, along with one 3/8" flat washer and secure.



PASSENGER SIDE DOOR
OPENING

E. Position the bar assembly where it is most comfortable for the Officer, by sliding it fore and aft in the door opening. The new style slotted end clamp 3G9073, allows for a sliding motion, in order to better position the gun rack. The bar itself should be positioned centered, in the roofline of the vehicle. For additional adjustment, it may require loosening or tightening of the 7/16" tap bolt in the end of the bar, on the passenger side.

F. From the passenger side, tighten the end bolt with a torque wrench. *Note: You must use a 5/8" crowfoot on the wrench to access the bolt head, or 6" extension with a 5/8" swivel socket.* Using this method, torque must be increased to 10-12 Ft. Lbs. See Figure 4.

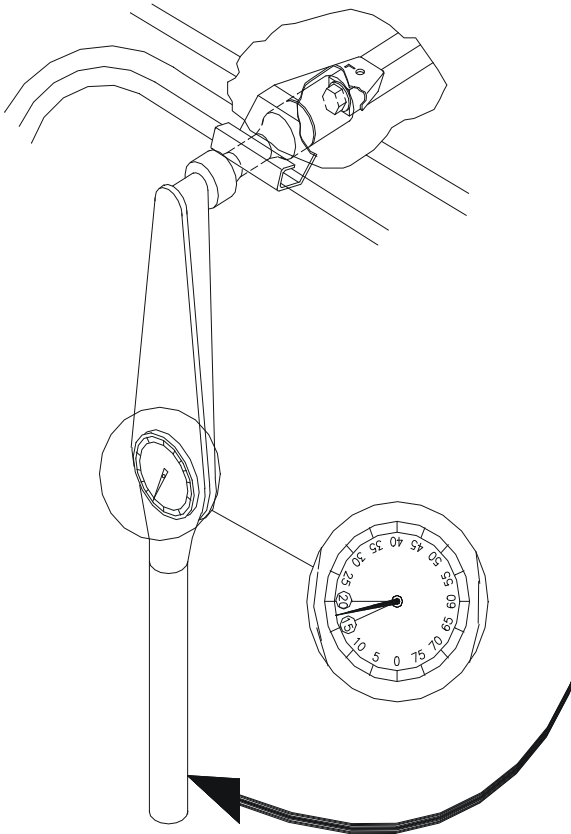


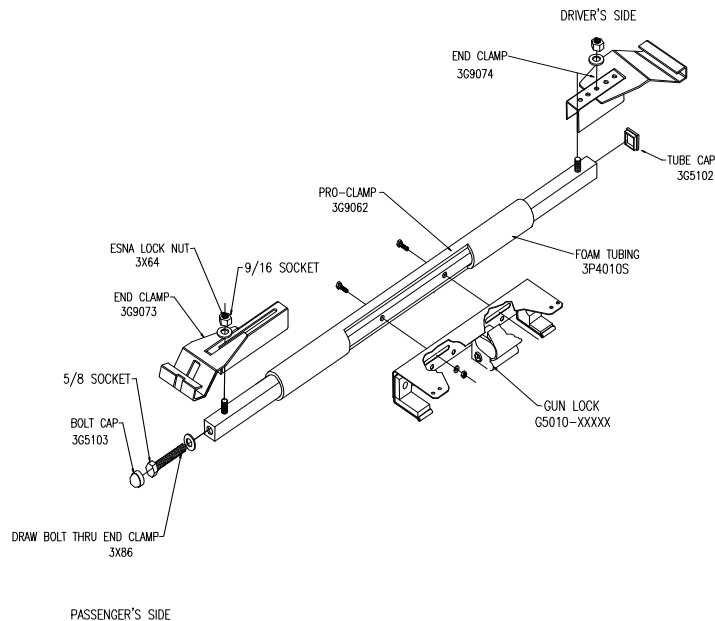
Figure 4 – PASSENGER SIDE
REAR DOOR OPENING

IV. Optional Mounting Instructions for the Pro-Clamp Gun Rack:

- A. Bolt the Gun Lock to the Pro-Clamp assembly as shown in Figure 5. Complete the wiring according to the instructions furnished with the Gun Lock and Timer System.
- B. The Gun Lock can be adjusted from side to side by loosening the bolts that hold the Gun Lock to the clamp. Once the weapon fits properly, retighten the bolts.

(Note: You may need to adjust the location of the Gun Rack Frame (1) and/or Lock Assembly (2) relative to the car and weapon being used. Example- shorter barrel, shorter stock, you may prefer to move the weapon to a more desirable position for easier access.)

ASSEMBLY DRAWING
FOR THE PRO-CLAMP
GUN RACK



V. These pictures may further assist you in your installation.



3/8" DRIVE STANDARD 5/8" SWIVEL SOCKET W/6" EXTENSION & CLICKER STYLE TORQUE WRENCH



3/8" DRIVE IMPACT 5/8" SWIVEL SOCKET W/ 6" EXTENSION & DIAL-TYPE TORQUE WRENCH



TORQUE WRENCHES AND EXTENSIONS



3/8" DRIVE - 5/8" CROW FOOT

IF THERE ARE ANY QUESTIONS OR CONCERNS PLEASE

CONTACT:

PRO-GARD PRODUCTS LLC

Phone 317-579-6680

Fax: 317-579-6681