

Partition Mount shown in Chevrolet Tahoe

# Gun Racks G7000 Series, Vertical Mounts

**Pro-gard**<sup>™</sup>  
PRODUCTS LLC.

## Other Gun Rack Options



**G5000 Series  
Universal Mount**



**G5500 Series  
Roof Mount**



**G4906 Series  
Compact Mount**



**G6300 Series  
Pro-cell Mount**

## G7000 Series, Vertical Mount, Gun Racks

### Features of Self-supportive, Vertical Mount Gun Rack - G7200 Series

- **No holes drilled** - easy installation with minimal down time
- **Fits comfortably behind 24" consoles in Chargers** (see far right)
- **For use in vehicles without partitions**
- **Adjustable brackets and gun locks with adjustable inserts\***
  - accommodates multiple weapon and accessory configurations
  - prevent road rattle
  - some components may be transferable to other Pro-gard gun rack mounting configurations
- **Durable, powder coated, steel construction** - resists corrosion and impact
- **8 second delay timer included**
  - allows for quick access to weapon with touch of button
  - choose from three override key styles: handcuff, straight, or vending

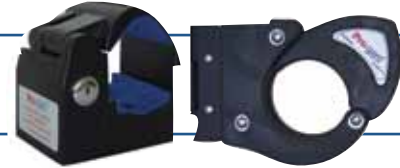
*\*contact customer service to find out more information*

### FOR USE WITHOUT PARTITION



*Shown in Dodge Charger*

**Gun locks are determined by a combination of mounting location, weapon type, and weapon accessories\***



### FOR USE WITH SPACE SAVER PARTITION



*Shown on 2600 Series Crown Victoria Partition*

### Features of Partition Mount, Vertical Gun Rack - G7210 Series

- **No holes drilled** - easy installation with minimal down time, must use in conjunction with a space saver partition
- **For use in vehicles with partitions**
- **Adjustable brackets and gun locks with adjustable inserts\***
  - accommodates multiple weapon and accessory configurations
  - prevent road rattle
  - some components may be transferable to other Pro-gard gun rack mounting configurations
- **Durable, powder coated, steel construction** - resists corrosion and impact
- **8 second delay timer included**
  - allows for quick access to weapon with touch of button
  - choose from three override key styles: handcuff, straight, or vending

*\*contact customer service to find out more information*